

FOR LEASE

Retail Space at Greenville Summit Apartments

NAI Earle Furman

\$28.00 SF/YR (NNN)



2,800 SF | Downtown Greenville

- ±2800 SF street level retail/restaurant space available
- High ceilings, terrazzo flooring, and hardwood walls
- Two entry points: one on Washington Street and one on Richardson Street
- Excellent walkability from the bustling S Main Street
- Central location to downtown offices and the 15 downtown hotels
- Lease Rate: \$28.00/SF NNN



Jimmy Wright

O: +1 864 232 9040

jwright@furmancap.com



Geoff Beans

O: +1 419 913 6903

gbeans@naiearlefurman.com

No Warranty, Or Representation, Express Or Implied, Is Made As To The Accuracy Of The Information Contained Herein, And The Same Is Submitted Subject To Errors, Omissions, Change Of Price, Rental Or Other Conditions, Prior Sale, Lease Or Financing, Or Withdrawal Without Notice, And Of Any Special Listing Conditions Imposed By Our Principals. No Warranties Or Representations Are Made As To The Condition Of The Property, Or Any Hazards Contained Therein Are Any To Be Implied.



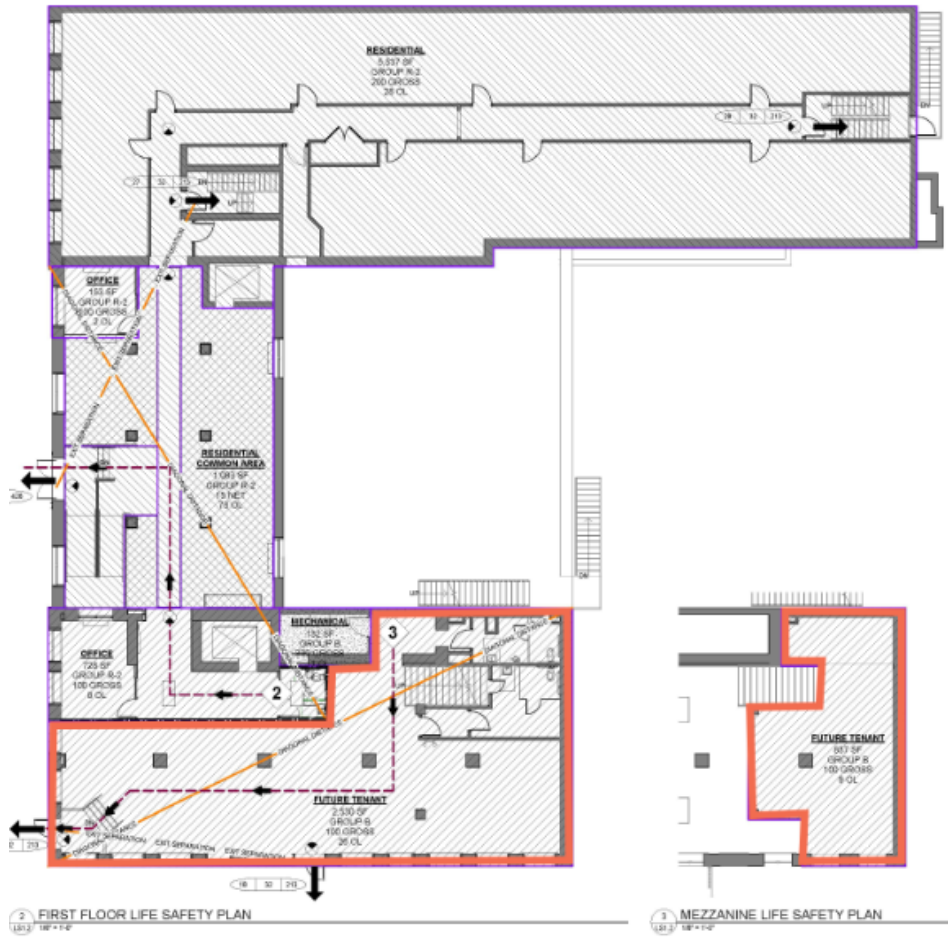
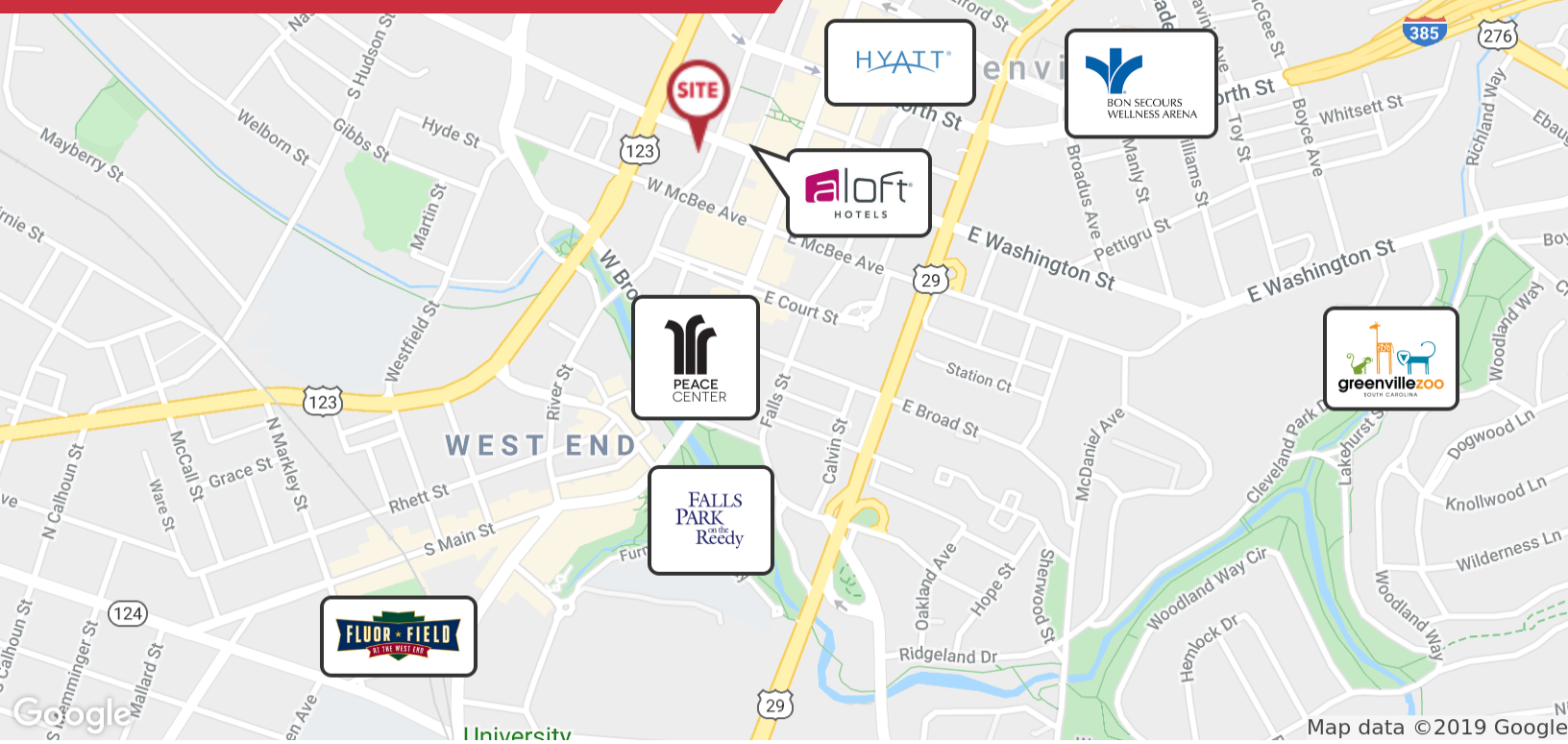
101 E Washington Street

Greenville, SC 29601

naief.com

FOR LEASE

201 W. Washington Street Greenville, SC 29601



✉ **Jimmy Wright**
 O: +1 864 232 9040
 jwright@furmancap.com

✉ **Geoff Beans**
 O: +1 419 913 6903
 gbeans@naiearlefurman.com

No Warranty or Representation, Express or Implied, is Made as to the Accuracy of the Information Contained Herein, and The Same is Submitted Subject to Errors, Omissions, Change of Price, Rental or Other Conditions, Prior Sale, Lease or Financing, or Withdrawal Without Notice, and of Any Special Listing Conditions Imposed by Our Principals. No Warranties or Representations are Made as to the Condition of the Property or Any Hazards Contained Therein. Are Any To Be Implied.

NAI Earle Furman